



FLORIDA STATE UNIVERSITY  
COLLEGE OF SOCIAL WORK  
*Institute for Justice Research and Development*

# **DEMOGRAPHIC CHARACTERISTICS OF 5 KEY MODEL RESEARCH PARTICIPANTS**

**July 2018**

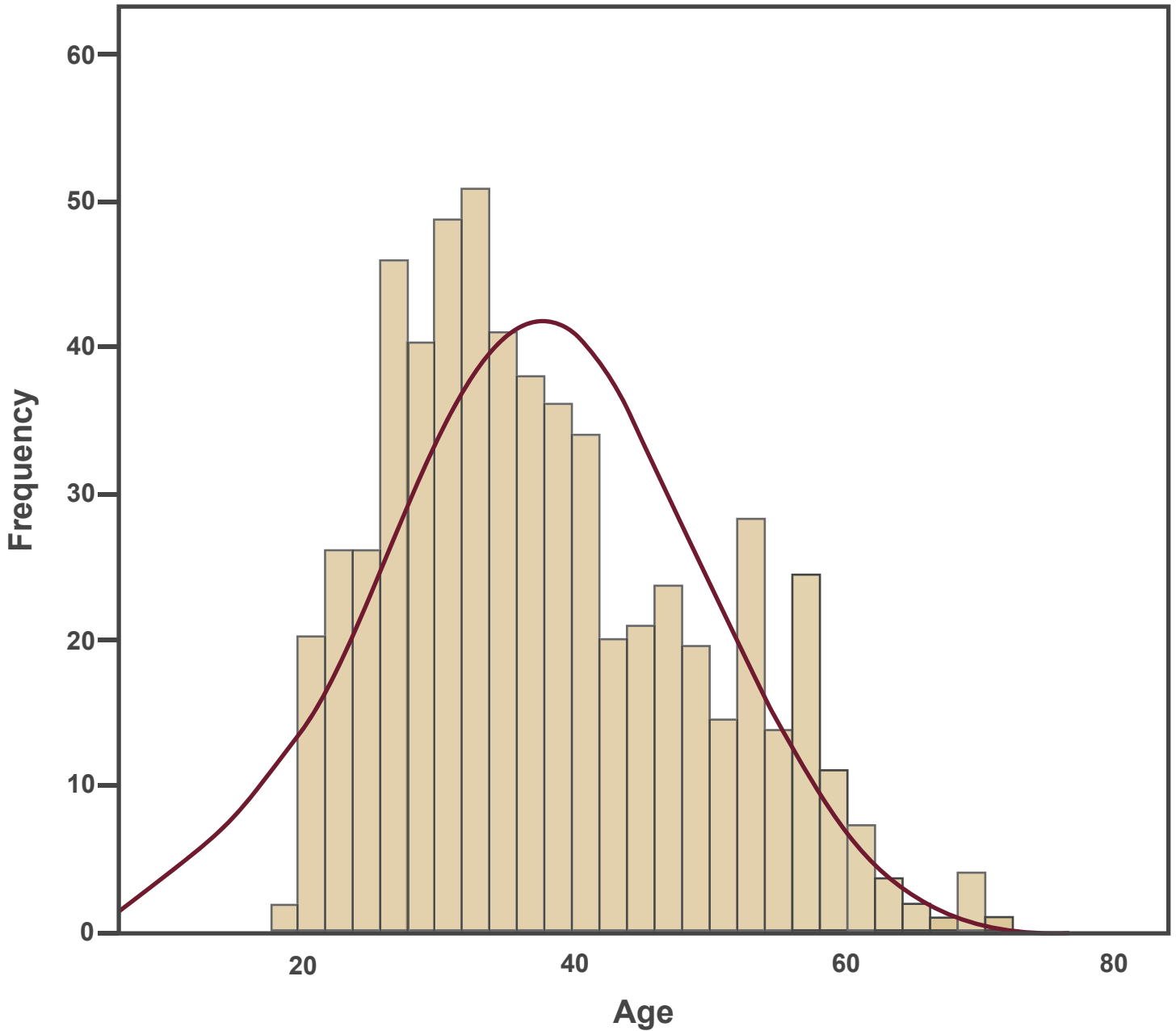
# DEMOGRAPHICS

Demographics	Total	Male	Female	Significance
Sample Size	621	571	50	
Age [In Years]	37.39	37.30	38.48	0.496
	[18-71]	[18-71]	[24-62]	
<b>Race</b>				0.072
African-American/Black	46.90%	48.30%	30.00%	
Latino/a	8.90%	8.90%	8.00%	
White	33.80%	32.00%	54.00%	
Asian or Pacific Islander	0.20%	0.20%	0.00%	
Native	1.10%	1.10%	2.00%	
Multi-racial	7.10%	7.20%	6.00%	
Other	2.10%	2.30%	0.00%	
<b>Hispanic</b>				0.609
Non-Hispanic	87.40%	87.50%	90.00%	
Hispanic	12.20%	12.50%	10.00%	
<b>Marital Status</b>				0.001
Single	63.80%	65.80%	40.00%	
Married	9.70%	8.20%	26.00%	
In a relationship	10.60%	10.30%	14.00%	
Separated	2.70%	2.80%	2.00%	
Divorced	11.10%	10.70%	16.00%	
Widowed	1.30%	1.40%	0.00%	
Other	0.80%	0.70%	2.00%	
<b>Sexual Orientation</b>				0.000
Homosexual	1.10%	0.50%	8.00%	
Bisexual	1.80%	0.40%	18.00%	
Heterosexual	96.90%	98.90%	74.00%	
Other	0.20%	0.20%	0.00%	
<b>Number Of Children</b>				
17 or older	1.12	1.10	1.38	0.240
	[0-17]	[0-17]	[0-6]	
18 or older	0.76	0.75	0.84	0.697
	[0-14]	[0-14]	[0-4]	
<b>Percentage With No Children</b>				
17 or younger	47.30%	48.20%	38.00%	0.168
18 or younger	70.00%	70.40%	66.00%	0.515

**\*Background:** All percentages indicate a positive response to that category. For example, the percentage for African-American/Black is the percentage of participants that positively indicated that has his/her race. Significance is indicating a statistical test of whether the mean/frequency for male participants is statistically different from the mean/frequency for female participants. Any value below .050 is highlighted in yellow and indicates a statistical difference.

# DEMOGRAPHICS (CONTINUED)

## Graph of Age



Mean=37.39  
Std. Dev.=11.743  
N=621

# COMMUNITY PARTICIPATION AND LEISURE ACTIVITIES

Activity	Total	Male	Female	Significance
Sit with others at meals	2.85	2.81	3.27	0.037
	[0-4]	[0-4]	[0-4]	
Hang out with friends	3.04	2.98	3.67	0.000
	[0-4]	[0-4]	[0-4]	
Attend social events	1.47	1.42	2.06	0.006
	[0-4]	[0-4]	[0-4]	
Attend organized groups for fun	1.32	1.3	1.59	0.221
	[0-4]	[0-4]	[0-4]	
Infomal celebrations	0.87	0.85	1.1	0.163
	[0-4]	[0-4]	[0-4]	
Group-based or organization-based celebrations	0.68	0.67	0.76	0.610
	[0-4]	[0-4]	[0-4]	
Go to fundraisers or charity events	0.24	0.23	0.37	0.350
	[0-4]	[0-4]	[0-4]	
Go to church, synagogue, temple, or other religious events	1.49	1.46	1.84	0.084
	[0-4]	[0-4]	[0-4]	
Play pickup games (cards, chess, sports)	2.58	2.63	2.08	0.041
	[0-4]	[0-4]	[0-4]	
Total score	14.52	14.33	16.73	0.019
	[0-35]	[0-32]	[0-35]	

**\*Background:** For each individual item, the score range is between 0 to 4 with higher score indicate more frequent participation in community and leisure activities. 0=Never, 1=Less than monthly, 2= Monthly, 3=Weekly, 4=Daily

An example of interpretation for the item “Sit with others at meals” is provided. An average score of 2.85 would fall between the categories of Monthly and Weekly, so an average participant sits with others at meals between 2 to 3 times a month because the value is greater than monthly but less than weekly.

The 9 items are added together to compute a total score. The total score ranges from 0 to 36 and higher score indicate more frequent participation in community and leisure activities.

Significance is indicating a statistical test of whether the mean for male participants is statistically different from the mean for female participants. Any value below .050 is highlighted in yellow and indicates a statistical difference.

# HEALTH SURVEY

Survey	Total	Male	Female	Significance
Physical Limitations	84.93	85.93	73.47	0.030
	[0-100]	[0-100]	[0-100]	
Overall Health	73.84	74.53	65.82	0.021
	[5-100]	[10-100]	[5-100]	
Emotional Well-Being	75.81	76.06	73.04	0.305
	[4-100]	[4-100]	[28-100]	

**\*Background:** Physical limitations is a score between 0 to 100 to indicate whether the participant reports difficulty in performing work or other activities because of physical health problems. Higher scores indicate fewer reported limitations in performing work or other activities. The average for a sample of adults with chronic illness such as diabetes, hypertension, coronary heart disease, and/or depression was 52.97, so scores around 50 would indicate a high level of physical limitations.

Overall health is a score between 0 to 100 to indicate the participant's perception of their health in general. Higher scores indicate a better perception of one's health. The average for a sample of adults with chronic illness such as diabetes, hypertension, coronary heart disease, and/or depression was 56.99, so scores around 55 would indicate the individual perceives their health as poor.

Emotional well-being is a score between 0 to 100 to indicate the participant's perception of their emotional health (i.e., feeling nervous, discouraged, calm, happy, etc.). Higher scores indicate a better perception of one's emotional health. The average for a sample of adults with chronic illness such as diabetes, hypertension, coronary heart disease, and/or depression was 70.38, so scores around 70 would indicate the individual has poor emotional health.

Significance is indicating a statistical test of whether the mean for male participants is statistically different from the mean for female participants. Any value below .050 is highlighted in yellow and indicates a statistical difference.

# CHILDHOOD TRAUMA

Type of Abuse	Total	Male	Female	Significance
Emotional Abuse	8.37	8.25	9.84	0.073
	[5-25]	[5-25]	[5-25]	
Physical Abuse	8.41	8.36	8.96	0.463
	[5-25]	[5-25]	[5-25]	
Sexual Abuse	6.03	5.79	8.88	0.001
	[5-25]	[5-25]	[5-24]	
Emotional Neglect	9.46	9.45	9.55	0.901
	[5-25]	[5-25]	[5-25]	
Physical Neglect	7.83	7.87	7.45	0.441
	[5-24]	[5-24]	[5-23]	

**\*Background:** 5 means it never happened, anything above 5 would be at least some instance of it.

Emotional abuse is a score that ranges between 5 to 25. Higher score indicate higher frequency of emotional abuse during childhood.

Physical abuse is a score that ranges between 5 to 25. Higher scores indicate higher frequency of physical abuse during childhood.

Sexual abuse is a score that ranges between 5 to 25. Higher scores indicate higher frequency of sexual abuse during childhood.

Emotional neglect is a score that ranges between 5 to 25. Higher scores indicate higher frequency of emotional neglect during childhood.

Physical neglect is a score that ranges between 5 to 25. Higher scores indicate higher frequency of physical neglect during childhood.

Significance is indicating a statistical test of whether the mean for male participants is statistically different from the mean for female participants. Any value below .050 is highlighted in yellow and indicates a statistical difference.

# SERVICE ASSESSMENT FOR ADULTS

Type of Abuse	Total	Male	Female	Significance
Needed help for mental health?	43.20%	41.00%	68.00%	0.073
Received help for mental health?	43.20%	42.30%	64.00%	
Needed help for mental health but received no services?	9.70%	10.00%	6.00%	0.463
Needed help for substance abuse?	42.00%	39.80%	68.00%	0.001
Received help for substance abuse?	53.00%	52.50%	58.00%	
Needed help for substance abuse but received no services?	9.00%	8.40%	16.00%	0.901

**\*Background:** All percentages indicate a positive response to that category. For example, the percentage for needed help for mental health is the percentage of participants that positively indicated that need.

# COGNITIVE FLEXIBILITY

Cognitive Flexibility	Total	Male	Female	Significance
Total	106	106.33	102.31	0.138
	[32-140]	[32-140]	[66-135]	
Alternatives Subscale	65.74	71.29	70.49	0.622
	[19-91]	[19-91]	[30-89]	
Control Subscale	35.39	35.05	31.82	0.017
	[13-49]	[13-49]	[17-49]	

**\*Background:** Cognitive flexibility is a score that ranges between 20 and 140. Higher scores indicate higher levels of cognitive flexibility or the ability to perceive difficult situations as controllable and then develop multiple alternative explanations and solutions for difficult situations. Scores above 103 means a participant is doing fairly well, and scores below 95 means a participant is not doing as well.

Alternatives subscale is a score that ranges between 13 and 91 and captures the component of cognitive flexibility that measures the ability to develop multiple alternative explanations and solutions for a difficult situation. Scores above 70 mean a participant is doing fairly well, and scores below 65 means a participant is doing as well.

Control subscale is a score that ranges between 7 and 49 and captures the component of cognitive flexibility that measures the ability to perceive a difficult situation as controllable. Scores above 34 mean a participant is doing fairly well, and scores below 29 means a participant is not doing as well.

Significance is indicating a statistical test of whether the mean for male participants is statistically different from the mean for female participants. Any value below .050 is highlighted in yellow and indicates a statistical difference.



# TRAUMA HISTORY

Incident	Percent Experienced				Frequency			
	Total	Male	Female	Sig.	Total	Male	Female	Sig.
Rob you or actually robbed you by using force or the threat of force	52.80%	55.50%	34.70%	0.005	2.30	2.27	2.82	0.557
Rob you or actually robbed you without force or threat of force	30.30%	30.80%	32.70%	0.784	5.83	5.53	9.06	0.575
Breaking into your home when you were not there	37.80%	39.50%	28.60%	0.133	1.55	1.51	2.07	0.244
Breaking into your home while you were there	7.60%	7.50%	10.20%	0.496	1.40	1.40	1.40	0.990
Serious accident at work, in a car, or somewhere else	54.30%	55.50%	53.10%	0.738	2.04	1.98	2.69	0.458
Experienced a natural disaster such as a tornado, hurricane, flood, major earthquake, or other natural disasters	18.00%	18.20%	20.40%	0.708	1.96	2.02	1.20	0.212
Experienced a man-made disaster such as a train crash, building collapse, bank robbery, fire, or other man-made disasters	10.30%	10.90%	6.10%	0.295	1.66	1.69	1.00	0.755
Exposed to dangerous chemicals or radioactivity that might threaten your health	13.00%	13.60%	10.20%	0.500	272.40	266.97	348.40	0.778
Ever seen someone seriously injured or killed	69.90%	73.30%	49.00%	0.000	8.95	9.39	1.38	0.472
Ever seen dead bodies (other than at a funeral) or had to handle dead bodies	50.70%	53.50%	32.70%	0.005	16.93	17.72	2.13	0.516
Close friend or family member murdered	56.80%	59.90%	41.70%	0.014	2.87	2.85	3.25	0.669
Close friend or family member killed by a drunk driver	12.90%	12.90%	16.30%	0.497	1.40	1.44	1.00	0.591
Had a spouse, romantic partner, or child die	17.60%	17.60%	22.40%	0.400	1.17	1.18	1.00	0.267
Had a serious or life-threatening illness	14.70%	14.40%	22.40%	0.129	21.47	23.76	1.11	0.588
Received news of a serious injury, life-threatening illness, or unexpected death of someone close to you	68.90%	70.20%	71.40%	0.854	2.95	3.02	2.15	0.239
Had to engage in combat while in military service	1.80%	2.00%	0.00%	0.322	12.00	12.00	0.00	NA
Made you have intercourse, oral or anal sex against your will	8.10%	6.10%	32.70%	0.000	69.51	95.35	10.93	0.309
Touched private parts of your body, or made you touch their private parts, under force or threat	8.20%	6.40%	30.60%	0.000	106.94	137.37	30.86	0.315

## TRAUMA HISTORY (CONTINUED)

Incident	Percent Experience				Frequency			
	Total	Male	Female	Sig	Total	Male	Female	Sig.
person tried to force you to have an unwanted sexual contact								
Anyone, including family members or friends, ever attacked you with a gun, knife, or some other weapon	42.20%	44.30%	28.60%	0.033	3.57	3.66	1.58	0.390
Anyone, including family members or friends, ever attacked you without a weapon and seriously injured you	14.70%	13.80%	28.60%	0.005	22.91	22.58	24.71	0.938
Anyone in your family ever beaten, spanked, or pushed you hard enough to cause injury	15.80%	16.10%	16.30%	0.967	72.79	75.79	34.71	0.594
Ever been in any other situation in which you were seriously injured	16.90%	18.20%	6.10%	0.031	2.33	2.35	1.67	0.834
Ever been in any other situation in which you feared you might be killed or seriously injured	24.50%	25.20%	22.40%	0.667	52.15	56.14	1.63	0.539
Experienced any other extraordinarily stressful situation or event that is not covered above	8.90%	8.80%	12.20%	0.418	7.91	6.62	18.00	0.389

**\*Background:** Percentage for each type of trauma is the percentage who positively indicated experiencing that trauma in their lifetime.

Significance is indicating a statistical test of whether the frequency for male participants is statistically different from the frequency for female participants. Any value below .050 is highlighted in yellow and indicates a statistical difference.

# EDUCATION AND EMPLOYMENT

<b>Education And Employment</b>	<b>Total</b>	<b>Male</b>	<b>Female</b>
<b>Number Of Jobs In Lifetime</b>	<b>9.66</b>	<b>9.87</b>	<b>7.18</b>
	[0-200]	[0-200]	[0-30]
<b>Longest Length Of Time At Job [In Months]</b>	<b>50.86</b>	<b>50.53</b>	<b>54.58</b>
	[.25-608.33]	[.25-608.33]	[2-425.83]
<b>Work Situation Prior To Incarceration</b>			
Unemployed or laid off	33.70%	32.60%	46.00%
Working full-time, 35 hours or more per week	44.00%	45.40%	28.00%
Working part-time, less than 35 hours per week	10.50%	10.90%	6.00%
Stay at home parent	0.50%	0.00%	6.00%
In-school only	1.40%	1.60%	0.00%
Retired	0.50%	50.00%	0.00%
Disability, not able to work	4.30%	3.90%	10.00%
Other	3.20%	3.30%	2.00%
<b>Typical Amount Of Money [In Dollars] Made During Six Months Prior To Incarceration</b>	<b>7480.19</b>	<b>7747.87</b>	<b>4396.25</b>
	[0-75000]	[0-75000]	[0-6000]
<b>Highest Grade Of School Completed</b>			
Less than High School or GED	27.90%	27.00%	38.00%
Completed High School or GED	39.00%	39.70%	30.00%
More than High School or GED	31.30%	31.40%	30.00%
<b>Completed Further Education During Incarceration</b>	<b>36.90%</b>	<b>37.30%</b>	<b>32.00%</b>

**\*Background:** All percentages indicate a positive response to that category. For example, the percentage for Less than High School or GED is the percentage of participants that positively indicated that has his/her highest grade of school completed.

# ABUSIVE BEHAVIOR INVENTORY

Abusive Behavior Inventory	Total	Male	Female	Significance
Total	2.00	1.97	2.30	0.035
	[1-4.63]	[1-4.25]	[1-4.63]	

**\*Background:** Abusive behavior inventory is a score that ranges between 0 and 5 and measures the frequency of psychological abuse experienced within close personal relationships. Higher scores indicate more frequent experiences with psychological abuse within close personal relationships. Scores of 2.0 or lower indicate the participant is doing fairly well, and score of 2.8 or higher would indicate the participant is not doing as well.

Significance is indicating a statistical test of whether the mean for male participants is statistically different from the mean for female participants. Any value below .050 is highlighted in yellow and indicates a statistical difference.

# EDUCATION EMPLOYMENT ASPIRATION AND SATISFACTION

Education Employment Aspiration And Satisfaction	Total	Male	Female	Significance
Employment Aspiration/Satisfaction	3.2	3.2	3.15	0.489
	[1-4]	[1-4]	[2-4]	
Educational Aspiration/Satisfaction	2.93	2.92	2.98	0.368
	[1.57-4]	[1.57-4]	[1.57-4]	

**\*Background:** Employment aspiration/satisfaction ranges between 1 and 4 and measure an individual’s desire to work or improve one’s work situation, and the satisfaction with one’s current work situation, whether employed or not. Higher scores represent higher level of aspiration and satisfaction with their employment status. People who are not doing well, will likely have scores below 2.5.

Education aspiration/satisfaction ranges between 1 and 4 and measures an individual’s desire to obtain additional education, and the satisfaction with one’s current level of educational attainment. Higher scores represent higher level of aspiration and satisfaction with their education. People who are not doing well, will likely have scores below 2.5.

Significance is indicating a statistical test of whether the mean for male participants is statistically different from the mean for female participants. Any value below .050 is highlighted in yellow and indicates a statistical difference.

# QUALITY OF RELATIONSHIPS INVENTORY

Quality of Relationship Inventory	Total	Male	Female	Significance
Person Most Closest To	3.37	3.34	3.59	0.009
	[1-4]	[1-4]	[1.5-4]	
Person Spend Most Time With	2.32	2.3	2.63	0.065
	[1-4]	[1-4]	[1.17-4]	

**\*Background:** Person most closest to ranges between 1 and 4 and measures the depth of support the participant perceives in the relationship with the person they report as being closest to. Higher scores indicate greater support from the person they are closest to. People who are doing fairly well will likely have scores that fall above 3, and people not doing as well will likely have scores that fall below 2.

Person spends most time with ranges between 1 and 4 and measures the depth of support the participant perceives in the relationship with the person they report as spending the most time with. Higher scores indicate greater support from the person they spend the most time with. People who are doing fairly well will likely have scores that fall above 3, and people not doing as well will likely have scores that fall below 2.

Significance is indicating a statistical test of whether the mean for male participants is statistically different from the mean for female participants. Any value below .050 is highlighted in yellow and indicates a statistical difference.

# SOCIAL PROVISIONS SCALE

Social Provisions Scale	Total	Male	Female	Significance
SPS	11.93	11.97	11.54	0.119
		[7-16]	[6-16]	

**\*Background:** Social provisions is a score that ranges between 4 and 16 and measures the participant's perceived worth within their social relationships. Higher scores represent greater levels of perceived worth within social relationships. People who are doing fairly well will likely have scores above 12, and people not doing as well, will likely have scores that fall below 8.

Significance is indicating a statistical test of whether the mean for male participants is statistically different from the mean for female participants. Any value below .050 is highlighted in yellow and indicates a statistical difference.

# TORONTO EMPATHY QUESTIONNAIRE

Toronto Empathy Questionnaire	Total	Male	Female	Significance
TEQ	42.52	42.19	46.33	0.001
	[13-64]	[13-64]	[28-64]	

**\*Background:** Toronto empathy questionnaire ranges between 0 and 64 and measures a participant's level of empathy. Higher scores means higher levels of empathy. People who are doing fairly well will likely have scores above 46, and individuals that are not doing as well will likely have scores below 43.

Significance is indicating a statistical test of whether the mean for male participants is statistically different from the mean for female participants. Any value below .050 is highlighted in yellow and indicates a statistical difference.



# LIFE BALANCE ASSESSMENT

Life Balance Assessment	Actual				Ideal			
	Total	Male	Female	Sig.	Total	Male	Female	Sig.
Sleeping	7.57	7.54	7.89	0.378	7.80	7.80	7.85	0.909
School	1.17	1.12	1.73	0.101	2.86	2.84	3.04	0.614
Paid Work	1.91	1.95	1.42	0.262	7.07	7.24	5.09	0.000
Household Chores	1.30	1.28	1.57	0.247	1.16	1.14	1.38	0.266
Community Activities	0.94	0.95	0.85	0.676	1.23	1.25	0.95	0.184
Recreational Activities	3.96	4.04	3.29	0.079	3.49	3.51	3.19	0.489
Commuting	0.85	0.86	0.73	0.493	1.08	1.10	0.78	0.250
Personal Relationships	1.47	1.44	1.83	0.174	3.21	3.14	3.99	0.142
Health and Self-Maintenance	1.82	1.83	1.82	0.975	2.01	2.03	1.73	0.391
Spiritual or Religious Activities	1.05	1.04	1.23	0.560	1.39	1.36	1.70	0.411

Life Balance Assessment	Difference of Ideal-Actual			
	Total	Male	Female	Sig.
Sleeping	0.24	0.26	-0.04	0.517
School	1.69	1.72	1.31	0.286
Paid Work	5.16	5.29	3.67	0.025
Household Chores	-0.14	-0.13	-0.19	0.820
Community Activities	0.29	0.30	0.10	0.416
Recreational Activities	-0.49	-0.53	-0.09	0.301
Commuting	0.24	0.25	0.05	0.446
Personal Relationships	1.73	1.70	2.16	0.380
Health and Self-Maintenance	0.18	0.21	-0.08	0.267
Spiritual or Religious Activities	0.34	0.32	0.47	0.542

**\*Background:** Life balance assessment assesses how an individual actually spends his or her time on a daily basis and compares it to how the individual would like to spend his or her time. Values for the measure are reported in hours. Actual is the number of hours the individual reports actually spending on that activity. Ideal is the number of hours the individual reports want to ideally spend on that activity. Difference of Ideal - Actual shows the imbalance between the actual and ideal number of hours the individual would like to spend on an activity. The following types of activities would correspond to the Five Key Model: Meaningful Work Trajectory (4 and 5), Positive Activities (7, 8, 11, and 12), and Positive Relationships (10).

Significance is indicating a statistical test of whether the mean for male participants is statistically different from the mean for female participants. Any value below .050 is highlighted in yellow and indicates a statistical difference.

# NETWORK COMPOSITION SURVEY

Survey	Total	Male	Female
Did you find yourself at risk of getting in trouble when you were with this person?	14.69%	15.06%	10.56%
Did this person encourage you to do things that may get you in trouble?	12.67%	12.31%	16.81%
Did you think this person engaged in illegal activities during the year prior to incarceration?	15.07%	15.24%	13.06%
Did this person talk about their involvement in the criminal justice system?	16.33%	16.16%	18.19%

**\*Background:** Proportion of individuals identified in a participant's social network that was positively indicated for the behavior detailed in the question.

# MENTAL HEALTH SCREENING

Survey	Total	Male	Female
Current Major Depressive Disorder	7.20%	6.30%	18.00%
Lifetime Major Depressive Disorder	29.80%	28.40%	46.00%
Current Manic Episode	1.80%	1.60%	4.00%
Lifetime Manic Episode	15.60%	14.70%	26.00%
Current Hypomanic Episode	0.30%	0.40%	0.00%
Lifetime Hypomanic Episode	1.10%	1.20%	0.00%
Current Social Anxiety Disorder	5.50%	4.40%	18.00%
Current Alcohol Use Disorder	35.30%	36.10%	26.00%
Severity of Alcohol Use Disorder [Percentage equals total percent with current alcohol use disorder]			
Mild	11.90%	12.60%	4.00%
Moderate	6.90%	7.20%	4.00%
Severe	16.40%	16.30%	18.00%
Substance Use Disorder	57.80%	56.70%	70.00%
Severity of Substance Use Disorder [Percentage equals total percent with current substance use disorder]			
Mild	10.10%	10.90%	2.00%
Moderate	9.70%	9.80%	8.00%
Severe	38.00%	36.10%	60.00%
Current Psychotic Disorder	5.30%	5.40%	4.00%
Lifetime Psychotic Disorder	12.20%	12.30%	12.00%
Current Generalized Anxiety Disorder	7.90%	7.70%	10.00%

**\*Background:** All percentages indicate the individual screened positively for symptoms of that mental disorder based on DSM-V criteria.