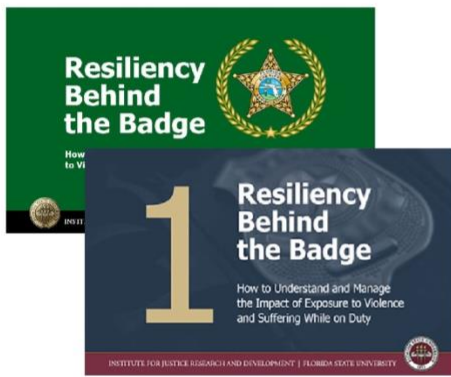
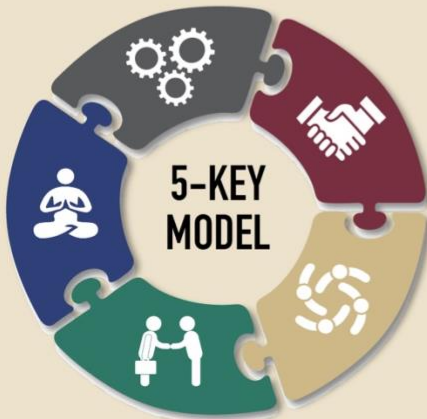
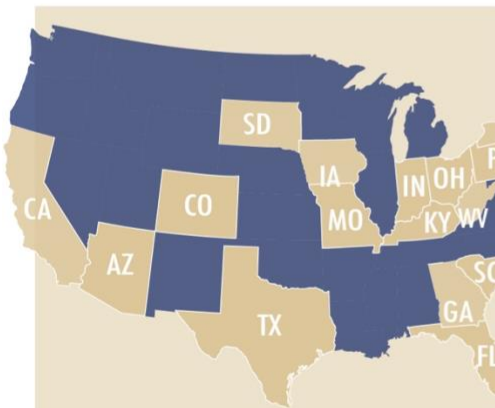


# INSTITUTE FOR JUSTICE RESEARCH AND DEVELOPMENT

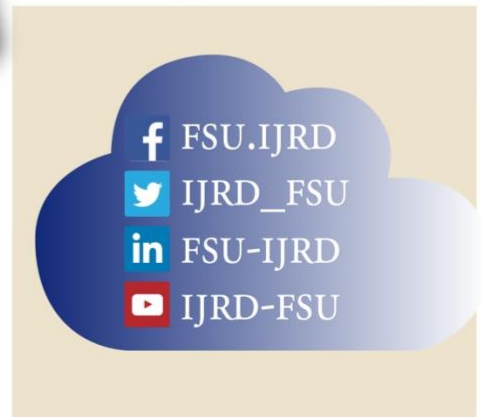
## Compendium of IJRD Metrics and Engagement 2018-2020



PRIORITIZING THE  
RAPID DISSEMINATION  
OF RESEARCH FINDINGS  
TO ADVOCATES,  
PROFESSIONALS &  
POLICYMAKERS



COLLEGE OF  
SOCIAL WORK  
FLORIDA STATE  
UNIVERSITY





# INSTITUTE FOR JUSTICE RESEARCH & DEVELOPMENT

Prioritizing the rapid dissemination of research findings to advocates, professionals, and policymakers.

## WHO IS IJRD?

The mission of IJRD is to use science to improve lives, communities, and institutions by developing and researching innovations that reduce unnecessary reliance on the criminal justice system and by offering solutions that produce equity and prosperity across race, socioeconomic class, and behavioral health status.

The Institute for Justice Research & Development's team of experts is housed in the College of Social Work at Florida State University and is led by Dr. Carrie Pettus-Davis, one of the nation's leading experts in behavioral health and criminal justice.

IJRD is a team of passionate innovators and social scientists. Through creativity and research, we are re-envisioning a country with a dramatically reduced need for the criminal justice system. Whether you find us in prison, on the Senate floor, or researching in the community, you will find us confronting challenges and offering data-driven solutions to make a difference in the lives of others. We are the translators who convert research into actionable toolkits. We stand against quick fixes and empty promises that do not result in enduring change. We are the thought leaders that bring together the greatest minds across the sciences to build equitable solutions that elevate the capacity of individuals and communities to thrive.

## IJRD DRIVES CHANGE BY:

- Researching ways to achieve **equity** across the criminal justice system from an individual's first contact with law enforcement to their release from incarceration.
- Collaborating with **national networks** of criminal justice professionals including law enforcement, corrections, prosecutors, community providers, and justice-system impacted individuals.
- Rapidly **disseminating research findings** to policymakers, criminal justice stakeholders, and the public to ensure that our data-driven solutions change policy and practice in real time.
- Creating and **delivering state-of-the art** and scalable service and treatment models in criminal justice and community-based settings.
- Training **current and future** professionals.

## IJRD'S GOALS BY 2025:

- Mobilize researchers in 25 states to derive locally-driven solutions.
- Build actionable research standards for examining effectiveness of criminal justice reforms.
- Drive awareness of data-driven solutions for criminal justice reform.

## NATIONAL EXPERTISE

- Law Enforcement, Prosecution, Courts, Jails & Prisons
- Mental Health & Substance Use Disorders, including Opioid Use Disorders
- Trauma & Trauma-Informed Care
- Reentry Trajectories, Employment & Social Support
- Professional Development, Program Evaluations & Training Certifications
- Corrections & Criminal Justice Employee Behavioral Health

## TAKE ACTION

Please reach out to **Dr. Kerensa Lockwood** [klockwood@fsu.edu](mailto:klockwood@fsu.edu) or (850) 644-4753 to schedule a time to learn more about how your philanthropic priorities align with the impact we can achieve together.

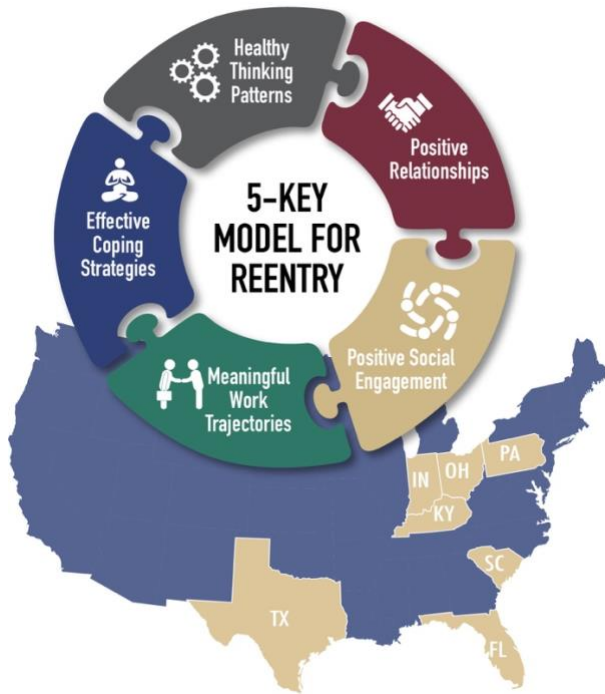
All personal and corporate donations are tax deductible.





## 2018–2020 IJRD RESEARCH PROJECTS

- We are conducting our flagship project, [A Multisite Randomized Controlled Trial of the 5-Key Model for Reentry](#), in 7 states & 21 counties across the nation.



- [The Prosecution Research Network: Research at the Intersection of Behavioral Health and Prosecution](#)



- [Building Capacity for Substance Use Disorder Treatment in Prisons](#)



- [Examining Crisis Stabilization Units and Mobile and Technology-Enhanced Aftercare](#)



- [Addressing Trauma Among Incarcerated Young Men Releasing from Prison](#)

- [Implementing Trauma-Informed Care in Jail Settings](#)



- Comparing the effectiveness of two evidence-based, trauma-informed interventions among women in prison.



- [Using Artificial Intelligence to Improve Well-Being among Individuals Under Community Supervision](#)



- Providing 'Support 4 Families' Program to the Reentry Center of Brevard, Florida



- Assessing Diversion Programs at the City of St. Louis Prosecutor's office

- Assessment & Services to the clients of the Florida State University College of Law's Legal Clinics



- Counseling Services to Youth Being Charged as Adults in the Leon County FL Detention Facility
- Conducting a Program Evaluation of 'Children of Inmates'

## 2018–2020 IJRD COMMUNITY PARTNERS



**Our Collaborators Include:**

### **133 Prison & Jail Correctional Facilities**

in Florida, Kentucky, Indiana, Ohio,  
Pennsylvania, South Carolina & Texas.

**We also partner with:**

#### **State Departments of Corrections**

- FL Department of Corrections
- IN Department of Corrections
- KY Department of Corrections
- MO Department of Corrections
- OH Department of Rehab & Correction
- PA Department of Corrections
- SC Department of Corrections
- TX Department of Criminal Justice

#### **Law Enforcement Offices**

- Alachua County, FL Sheriff's Office
- Columbia County Sheriff's Office
- Gainesville, FL Police Department
- Lake City, FL Police Department
- Levy County Sheriff's Office
- Leon County, FL Sheriff's Office,
- Seminole County, FL Sheriff's Office

#### **Probation and Parole Offices**

- Allegheny, PA Adult Probation Office
- Dallas, TX District Parole Office
- IN Community Supervision & Parole
- Jacksonville, FL Probation & Parole
- Lexington, KY Probation & Parole Office
- Missouri Probation & Parole
- Ohio Probation and Parole
- SC Department of Probation,  
Parole, and Pardon Services
- Tippecanoe County, IN Community  
Corrections
- West Lafayette, IN Community  
Corrections

#### **Prosecutor's Offices and Associations**

- 13<sup>th</sup> Circuit Solicitor's Office, County of  
Greenville, SC
- Arapahoe County, CO District  
Attorney's Office
- Association of Prosecuting Attorneys
- Boulder Cnty, CO District Attorney's Office
- Cabell Cnty, WV Prosecuting  
Attorney's Office
- Contra Costa County District  
Attorney's Office
- Dallas County, TX District Attorney's Office
- Denver County, CO District Attorney's Office
- District Attorney's Past and Present  
Office, South Boulder County, CO
- Fair and Just Prosecution
- Florida Office of the State Attorney,  
2<sup>nd</sup> Judicial Circuit
- Franklin County, OH Prosecutor's Office
- Harris County, TX District Attorney's Office
- Hillsborough County, FL State  
Attorney's Office
- International Association of Prosecutors
- Leon County, FL District Attorney's Office
- Licking County, OH Prosecutors Office
- Long Beach, CA Prosecutor's Office
- Los Angeles City, CA Attorney's Office
- Los Angeles County, CA District  
Attorney's Office
- Manhattan, NY District Attorney's Office
- Missouri Circuit Attorney's Office
- National District Attorneys Association
- Pennington County, SD State Attorney's  
Office
- Portsmouth Commonwealth's Attorney's  
Offices, WV
- Pretrial Justice Institute
- San Diego, CA District Attorney's Office
- St. Louis, MO Circuit Attorney's Office
- St. Louis County, MO Prosecuting  
Attorney's Office
- South Georgia District Attorney's Office
- The Justice Collaborative

#### **Community-Based Services Providers and Associations**

- Alvis, Inc., OH
- Big Bend After Reentry  
Coalition, FL
- Children of Inmates, FL
- Christian HELP, FL
- City Rescue Mission, FL
- Defy Ventures, Multi-state  
Gateway Foundation,  
Multi-state
- Goodwill Industries, PA
- Hillsborough County, FL  
Ex-Offender Re-Entry  
Coalition
- Jacksonville, FL Reentry  
Center
- Joseph House, FL
- Lamont Enterprises
- Mercy House, FL
- Meridian Behavioral  
Healthcare, FL
- Metropolitan Community  
Services T.O.U.C.H., OH
- My Community Cares,  
Inc., FL
- Re-Entry Center of  
Brevard, FL
- Re-Entry Coalition, FL
- Jacksonville Reentry  
Portal, FL
- Public Advocates in  
Community Re-Entry, IN
- Ready4Work, Tallahassee,  
FL Reentry Center
- Soteria, Inc., SC
- The Equitas Project, an  
initiative of Mental Health  
Colorado
- Unlocking Doors, Inc, TX
- Volunteers of America, KY

## 2018–2020 PUBLICATIONS & PRESENTATIONS

### We have published:

#### 16 [Academic/Refereed Publications](#)

- We have 10 additional papers and book chapters [currently under review](#) for publication

#### 8 [White Papers](#)

#### 12 [Research Reports](#)

7 [Tools for the Field](#) including a treatment manual, the Reentry Well-Being Assessment Tool (RWAT), and a questionnaire designed to facilitate data collection about the COVID-19 related experiences of incarcerated and recently released individuals.



### We have delivered:

**34** Invited Presentations to policymakers, practitioners, scholars, and community members

**27** Academic/Refereed Presentations to scholarly audiences

## 2018–2020 UNIVERSITY PARTNERS

### FSU FACULTY PARTNER DISCIPLINES



- College of Communication & Information
  - School of Information
  - School of Communication
- College of Education
- College of Law
- College of Medicine
- College of Nursing
- College of Social Work
- Department of Computer Science
- Department of History
- Department of Psychology
- Florida State University Libraries
- Moran Institute for Global Entrepreneurship

### NON-FSU UNIVERSITY PARTNERS & RESEARCH AFFILIATES



- Academy for Justice, Arizona State University, Law Center for Advancing Correctional Excellence (ACE!), George Mason University
- Center for Justice Research, Texas Southern University
- Center for Social Dev, WA University in St. Louis
- Computational Justice Lab, Claremont Graduate Univ.
- Florida A & M University, Sociology and Criminal Justice
- Purdue University, Computer Science
- University of Alabama at Huntsville, Computer Science
- Carlow University, Social Work
- Cleveland State University, Social Work
- Jacksonville University, Social Sciences
- John Jay College of Criminal Justice, The City University of New York
- Indiana State University, Social Work
- Ohio University, Social Work
- Ohio State University, Social Work
- University of Denver, Social Welfare
- University of Indianapolis, Social Work
- University of Iowa, Social Work
- University of Kentucky, Social Work
- Washington University in St. Louis, Social Work
- Winthrop University, Social Work

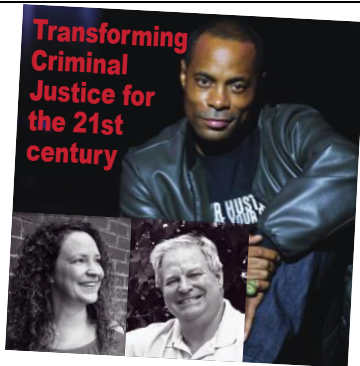


## 2018-2020 HOSTED EVENTS

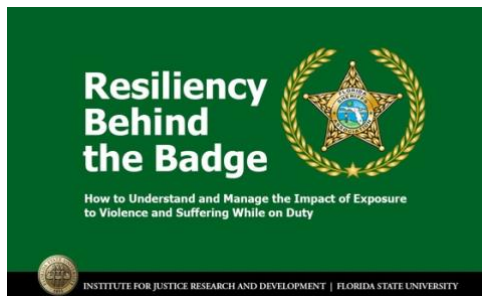


IJRD hosted an [Open House event](#) on April 18, 2019 featuring Secretary of Corrections, Mark Inch as the keynote speaker.

IJRD co-hosted two [Reentry symposia](#) in Tallahassee, Florida designed to promote collaborations across local universities, community colleges, and reentry service providers.



IJRD hosted the narrative spoken word event, [Transforming Criminal Justice for the 21<sup>st</sup> Century](#), on June 27, 2019.



IJRD co-hosted a [joint press conference](#) with the Florida Sheriff's Association to announce the [Resiliency Behind the Badge](#) training designed to help law enforcement officers to recognize the impact of their work and connect to support services when needed.



IJRD virtually convened the Prosecution Research Network on July 13-14, 2020 with partners at the Equitas Project (an initiative of Mental Health Colorado). The 2020 Prosecution Research Network Summit provided an opportunity for leaders

and decision-makers in prosecution from every region of the country to identify research and policy strategies to improve health, reduce incarceration, and increase national safety, prosperity, and well-being.



IJRD co-hosted an event with the [Public Interest Law Center](#) bringing together Social Work and College of Law graduate students to discuss bail reform and pre-trial detention.



IJRD hosted our first All-Team Event February 5-6, 2020 in Atlanta, Georgia. We plan to hold the event again virtually in February, 2020.

## 2018–2020 ADVISORY BOARDS

In 2019, we formed two advisory boards at IJRD to enhance our research:

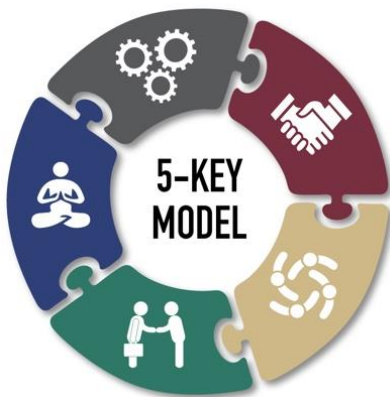


The **9-member** [National Scientific Advisory Committee](#) shapes and guides the science we generate and disseminate. All committee members have expertise conducting behavioral health and criminal justice research and work with us to assist with overall strategic research guidance, advise on technical aspects of the science and scientific integrity, help to expand activities in research, capacity building, and policy outreach, and facilitate research priority setting.



The **10-member** [Community Advisory Board](#) maximizes the impact of our work at IJRD by ensuring we are relevant, accessible, and equitable. All board members have lived experience of the criminal justice system and work with us to review data collection strategies and materials, enhance intervention content and implementation strategies, generate strategies to foster connection with justice-involved individuals, and identify policy gaps and guide research priority setting.

## 2018–2020 POST-MASTER'S FELLOWSHIP



We created an innovative [Post-Master's Fellowship](#) to provide training to new Master of Social Work graduates at the intersection of social work and criminal justice. We have brought on **18** fellows to work primarily on the 5-Key Model project in Indiana, Ohio, and South Carolina.



**Arizona State University**  
**Academy for Justice**

One IJRD Law and Policy Fellow is co-located at the Academy for Justice at the Arizona State University College of Law.

The purpose of this Fellowship position is to bridge legal and social work scholarship with practice and policy in communities, amplifying data-driven solutions for criminal justice reform.

## 2018–2020 STUDENT INVOLVEMENT



Since we opened our doors in 2018, we have served as a “talent pipeline” for students at all levels.

- We have hosted 24 Bachelor’s students pursuing degrees in English, Communication and Information Sciences, Criminology, Family & Child Sciences, Psychology, Statistics, and Social Work.
- We have employed 19 Master’s students as Research Technicians who assist with communications and research implementation. These students were pursuing graduate degrees in Social Work, Criminal Justice, and Public Administration.
- IJRD has placed 16 students in field work or practicum placements.
- Six doctoral students work with IJRD and assist in all aspects of IJRD’s research projects.
- Our 2 Doctoral Affiliates who serve as the lead researcher and author of their own projects using IJRD data.

## 2018–2020 STUDENT & POST-MASTER’S FELLOW PROMOTIONS



Seven IJRD Master’s level Research Technicians were promoted: two were promoted to Graduate Research Assistants, two now work with IJRD as Doctoral students, one joined us a Post- Master’s Fellow, and two were promoted to full-time IJRD staff.



Additionally, two Post-Master’s Fellows were promoted to full-time IJRD staff.



## 2018–2020 PROFESSIONAL TRAINING & CONTINUING EDUCATION

In December 2020, IJRD launched several new trainings to catalyze the translation of our state-of-the-art practices into workplace innovations. Learn about our trainings below and contact us to [customize professional trainings and clinical services](#) to meet your needs.

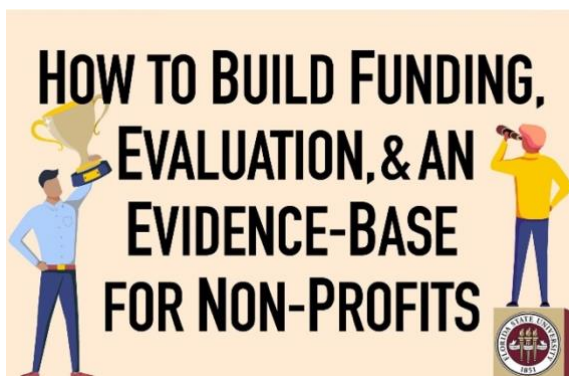


[Resiliency Behind the Badge](#) is an innovative web-based interactive training designed to help law enforcement officers recognize physical and mental indicators of traumatic stress. It includes techniques to manage and respond to stress both on and off the job. Trainees also learn when to seek help from a professional, as well as how to identify potential symptoms in their peers to direct them to help, when necessary.

[Learn More and Register here!](#)

This first-of-its-kind training was featured in a press conference with Florida House Speaker Chris Sprowls, Walton County Sheriff Michael Adkinson Jr, past president of the Florida Sheriffs Association and Carrie Pettus-Davis, IJRD Founding Executive Director on December 17, 2020.

[Click here to read media coverage of the event!](#)

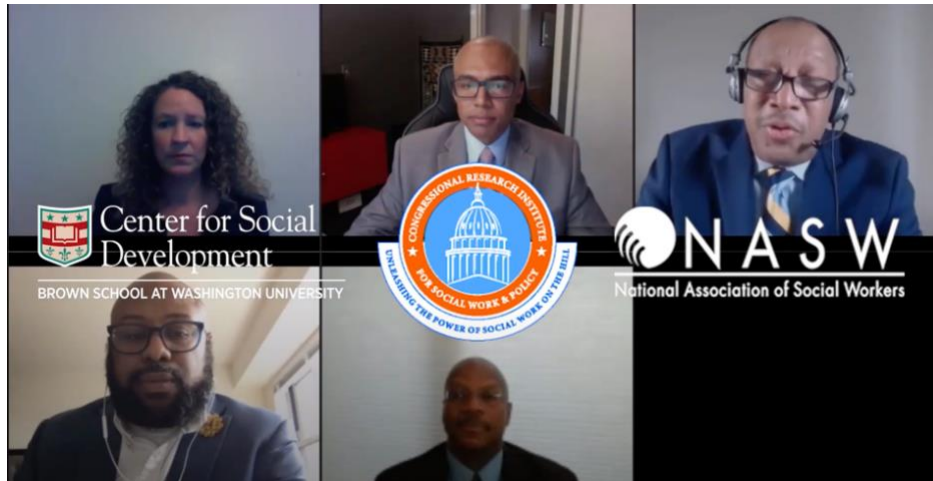


This [exciting video-based training series](#) designed to help non-profit/NGO administrators and staff to amplify their organization's mission by identifying potential funding sources, preparing grant applications, designing new programs, conducting program evaluations, collecting high-quality data, and building an evidence-base for your programs.

This training series was created in response to the most frequent requests IJRD has received

from non-profit leaders, helping them to amplify their missions and identify data-driven solutions for their organization and clients. Each training series brings research concepts to trainees in plain, jargon-free language, ensuring that trainees with no formal research experience can grasp and apply the concepts. [Learn more and register!](#)

## 2018–2020 CONGRESSIONAL BRIEFINGS & NATIONAL WORKING GROUPS



IJRD team members have participated in **8** Congressional Briefings and National Working Groups on criminal justice reform and smart decarceration.

**Watch the Congressional Briefings here:**

[Social Work and the Future of Policing](#), June 30, 2020

[Undoing Racism: Eliminating Debilitating Criminal Penalties](#), December 2, 2020

## 2018–2020 MEDIA COVERAGE



**IJRD has received broad national media attention for our data-driven solutions to criminal justice reform.**

**Media coverage since we opened our doors in 2018:**

- IJRD has been featured in [media](#) 87 times
- 14 [Podcasts and Interviews](#) highlight the work of IJRD and the IJRD team
- Carrie Pettus-Davis has participated in 4 Press Conferences with state governors and other leaders to highlight the impact of IJRD's work nationally.

## 2018–2020 FINANCIAL SUPPORT



We have received **\$14,904,853** in grants and contracts since January 2018 to support our research.

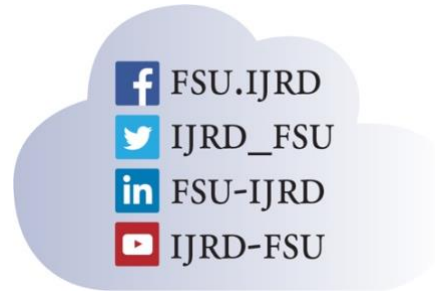
- We have received **\$8,512,903** from private foundations.
- We have been awarded **\$6,209,950** in public grants.
- We have earned **\$182,000** in contracts.

Overall, we have applied for \$33,180,653 in grant funding; we also submitted a \$100 million proposal to the MacArthur 100&Change Challenge.

## 2018–2020 SOCIAL MEDIA, CONTACTS & NEWSLETTERS

IJRD maintains [Facebook](#), [Twitter](#), [YouTube](#), and [LinkedIn](#) pages.

- We have 2,846 followers across our IJRD accounts.
- IJRD has 1,549 individuals on an external distribution list. These individuals receive emails newsletters, and reports from IJRD.
- We have sent out 11 Internal Newsletters and 4 External Newsletters.





## 2018-2020 FUNDRAISING CAMPAIGNS



By 2025, IJRD will mobilize researchers in 25 states  
to derive locally-driven solutions.

**Learn how you can join us as a Pathfinder, Luminary, or Proclaimer.**

# DAY 1

**Institute for Justice Research and Development** | College of Social Work | Florida State University  
2010 Levy Avenue, Bldg B, Suite 3400, Tallahassee FL 32310 | 850-645-2829 | [ijrd.csw.fsu.edu](http://ijrd.csw.fsu.edu)