

Employment and Behavioral Health

5-KEY MODEL PRELIMINARY RESULTS FOR POLICY STAKEHOLDERS

FLORIDA | KENTUCKY | TEXAS | PENNSYLVANIA

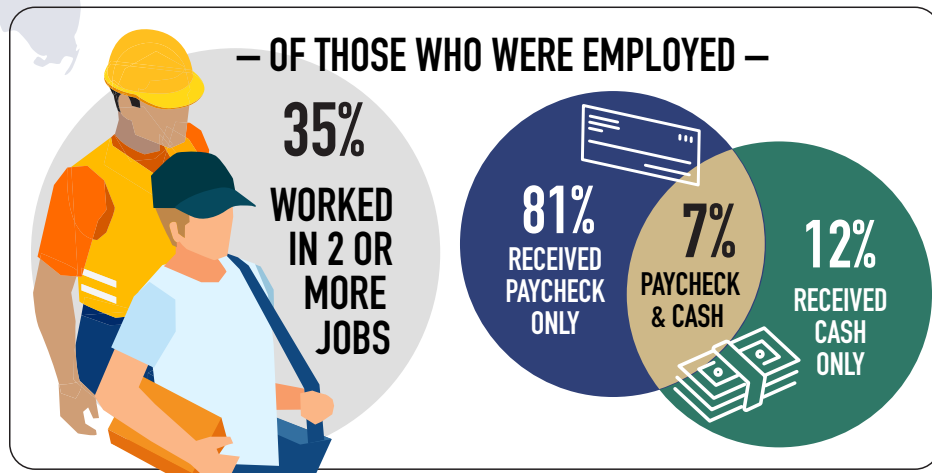


INSTITUTE FOR JUSTICE RESEARCH AND DEVELOPMENT

FLORIDA STATE UNIVERSITY • COLLEGE OF SOCIAL WORK • IJRD.CSW.FSU.EDU

FLORIDA 8 Months After Release

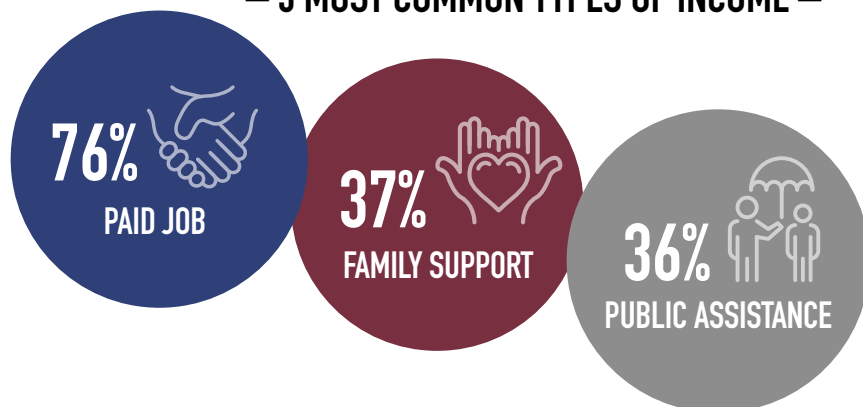
Employment Over Past 6 Months



— 3 MOST COMMON JOB TYPES FOR THOSE EMPLOYED —



— 3 MOST COMMON TYPES OF INCOME —



OF THOSE WHO ARE UNEMPLOYED

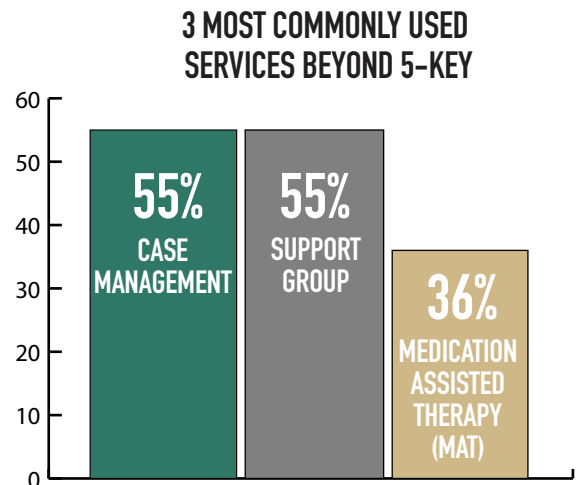
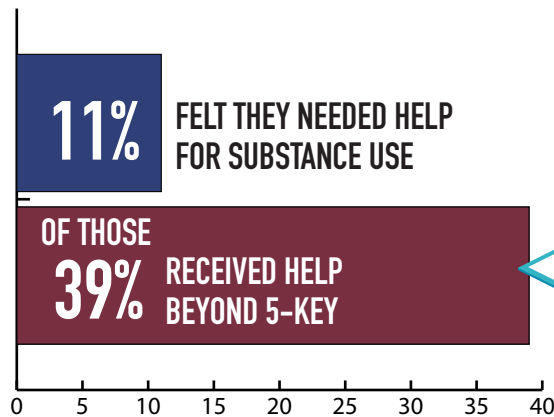


INSTITUTE FOR JUSTICE RESEARCH AND DEVELOPMENT

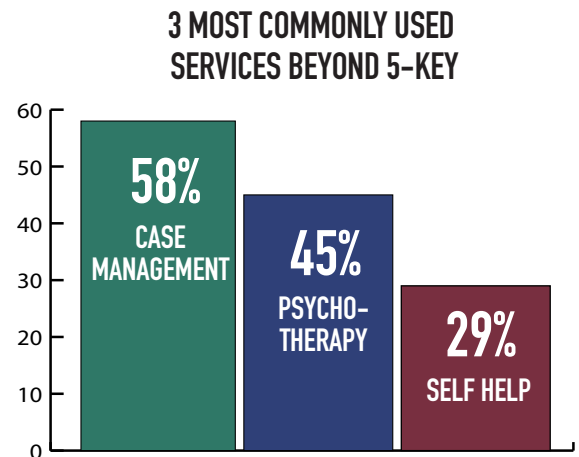
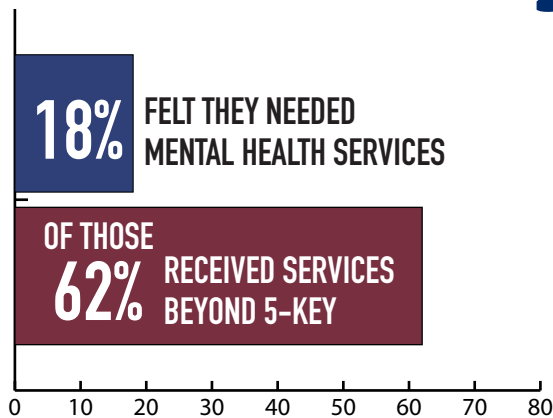
FLORIDA STATE UNIVERSITY • COLLEGE OF SOCIAL WORK • IJRD.CSW.FSU.EDU

FLORIDA 8 Months After Release

Substance Use



Mental Health



**OF THOSE
REQUIRED TO PAY
CHILD SUPPORT**

**1%
FAILED
TO PAY**

**99%
PAID SUPPORT**

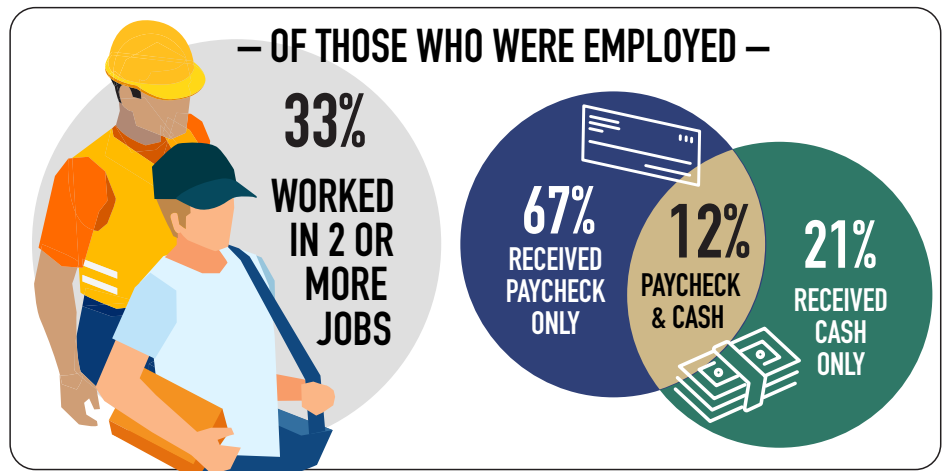
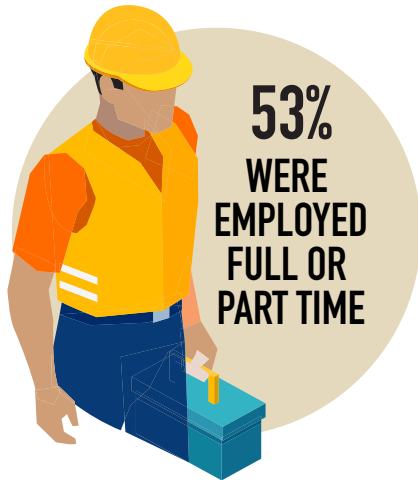


INSTITUTE FOR JUSTICE RESEARCH AND DEVELOPMENT

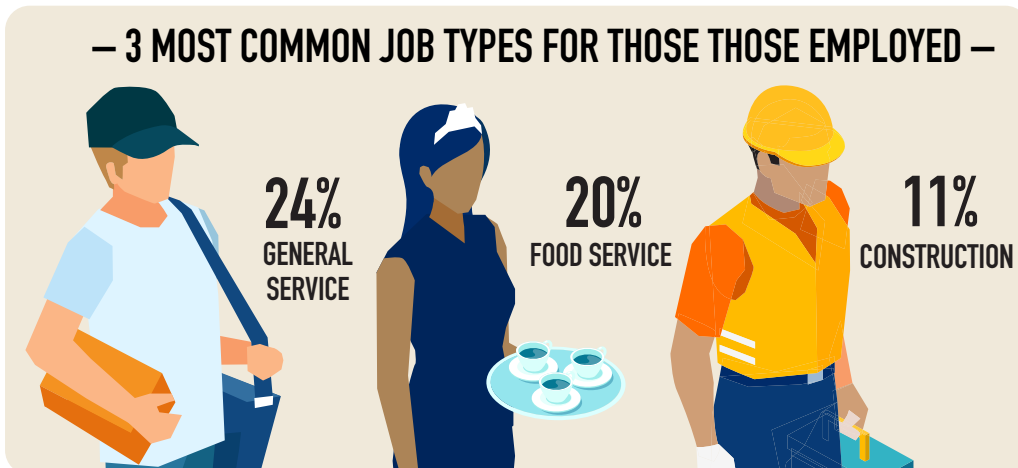
FLORIDA STATE UNIVERSITY • COLLEGE OF SOCIAL WORK • IJRD.CSW.FSU.EDU

KENTUCKY 8 Months After Release

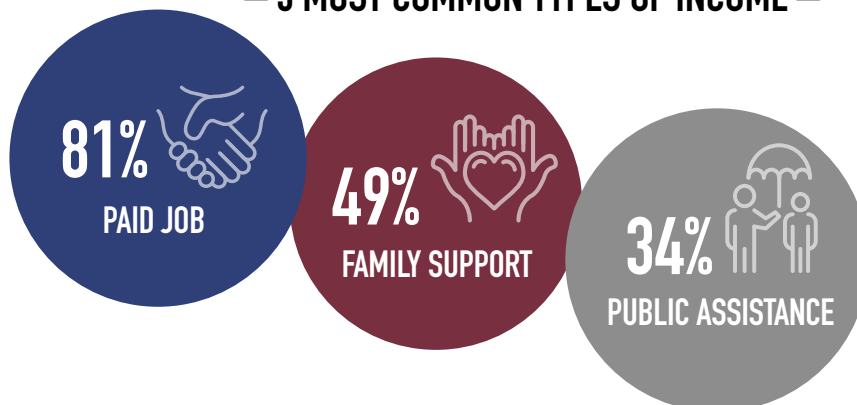
Employment Over Past 6 Months



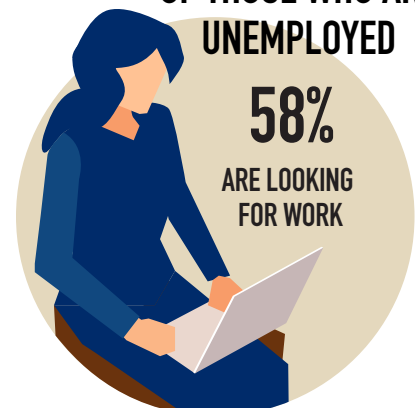
— 3 MOST COMMON JOB TYPES FOR THOSE THOSE EMPLOYED —



— 3 MOST COMMON TYPES OF INCOME —



OF THOSE WHO ARE UNEMPLOYED

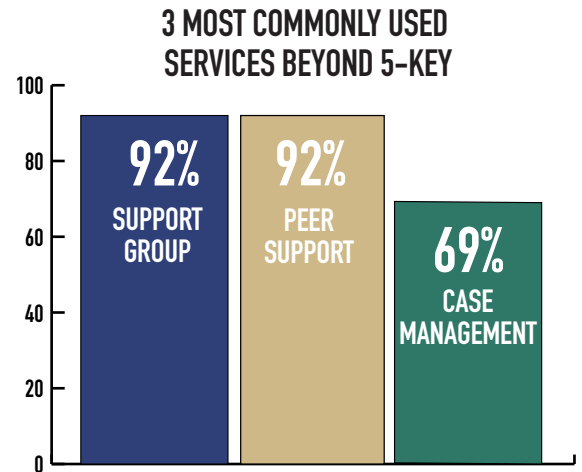
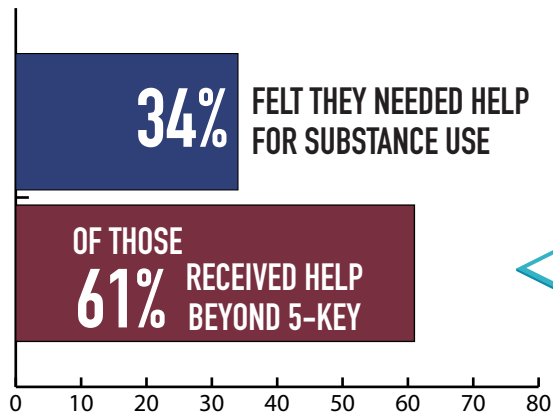


INSTITUTE FOR JUSTICE RESEARCH AND DEVELOPMENT

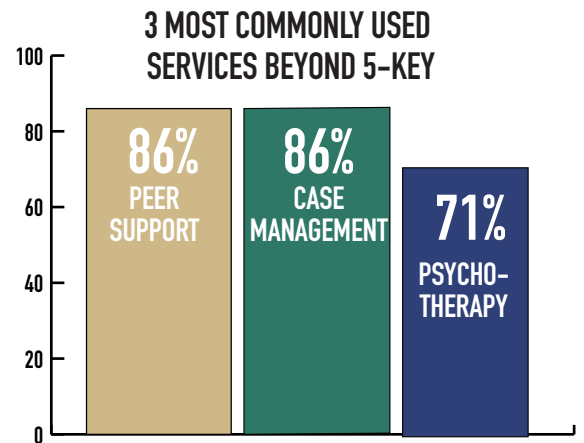
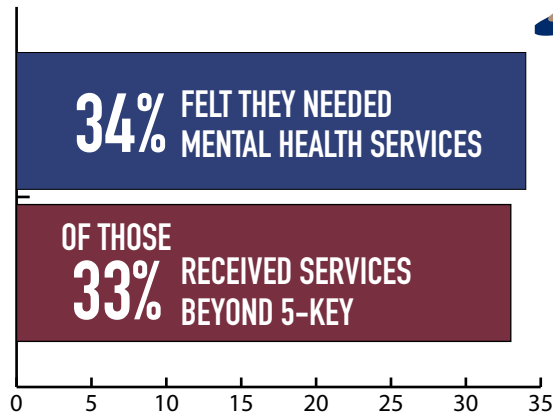
FLORIDA STATE UNIVERSITY • COLLEGE OF SOCIAL WORK • IJRD.CSW.FSU.EDU

KENTUCKY 8 Months After Release

Substance Use

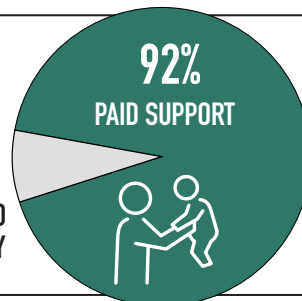


Mental Health



OF THOSE
REQUIRED TO PAY
CHILD SUPPORT

8%
FAILED
TO PAY

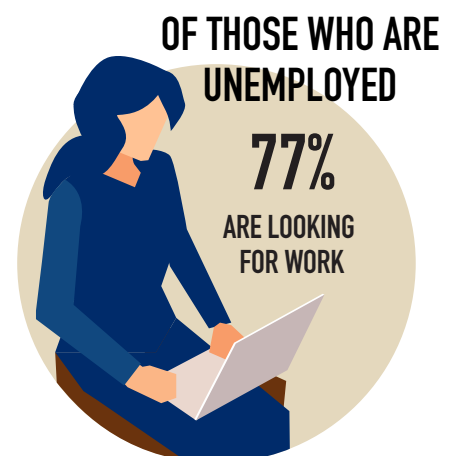
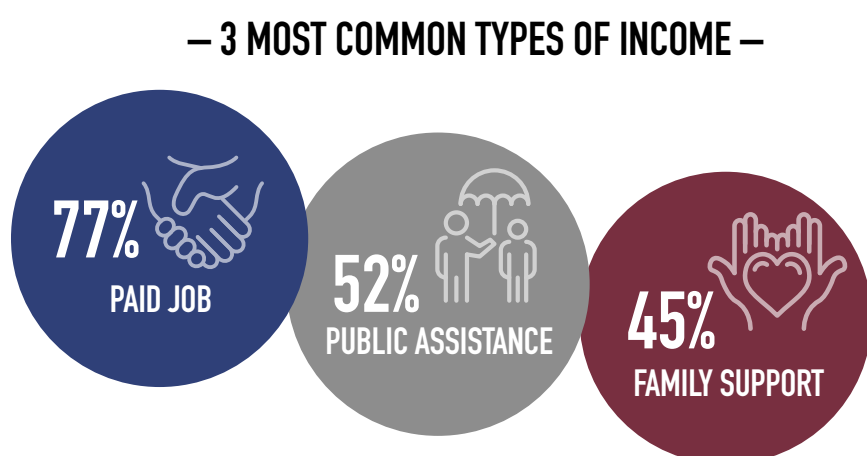
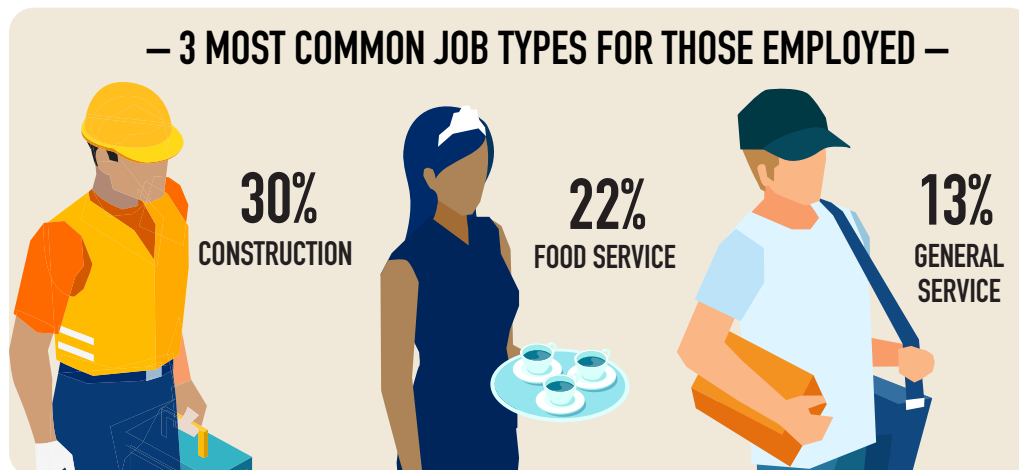
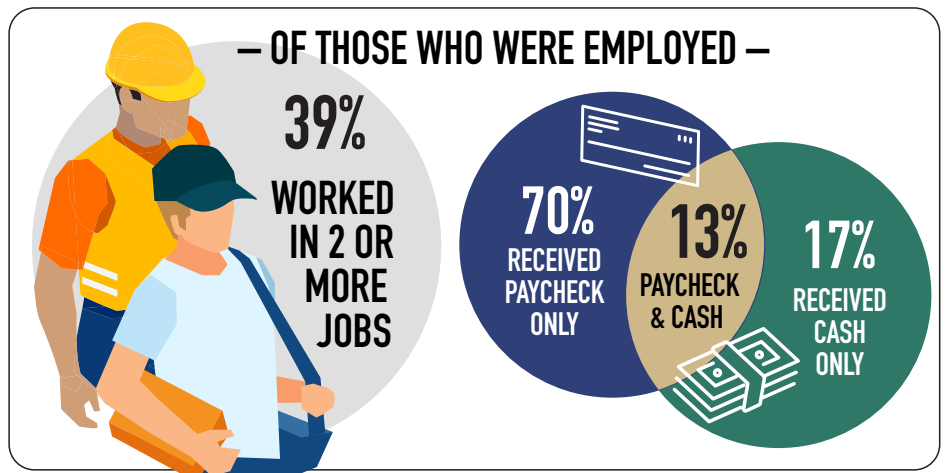


INSTITUTE FOR JUSTICE RESEARCH AND DEVELOPMENT

FLORIDA STATE UNIVERSITY • COLLEGE OF SOCIAL WORK • IJRD.CSW.FSU.EDU

PENNSYLVANIA 8 Months After Release

Employment Over Past 6 Months

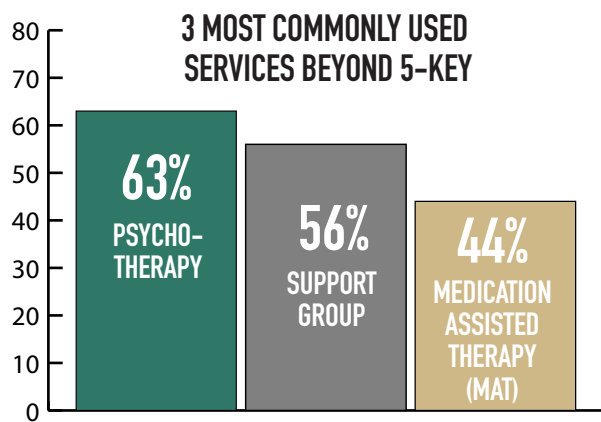
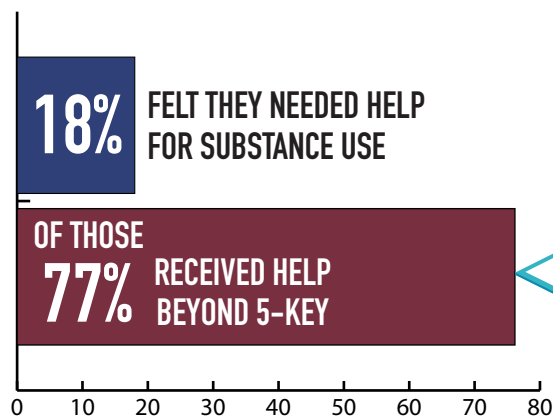


INSTITUTE FOR JUSTICE RESEARCH AND DEVELOPMENT

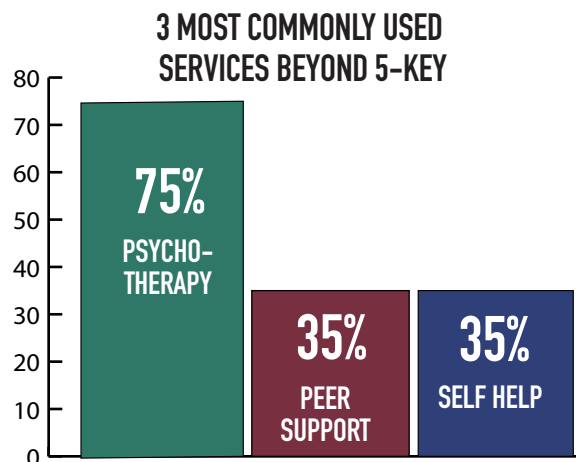
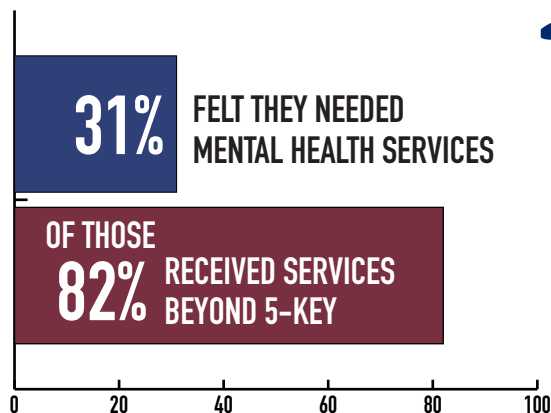
FLORIDA STATE UNIVERSITY • COLLEGE OF SOCIAL WORK • IJRD.CSW.FSU.EDU

PENNSYLVANIA 8 Months After Release

Substance Use



Mental Health



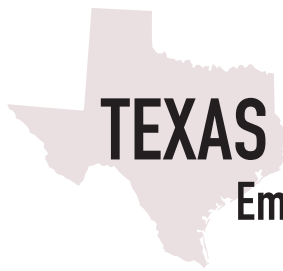
OF THOSE REQUIRED TO
PAY CHILD SUPPORT

100%
PAID SUPPORT



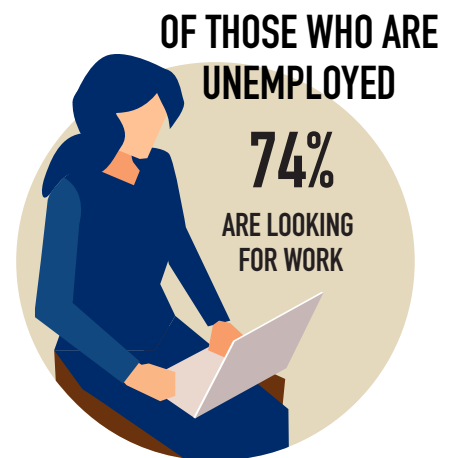
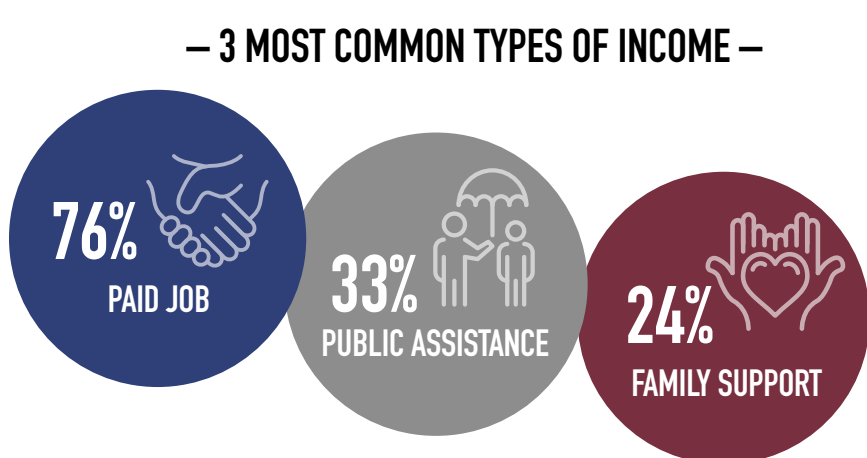
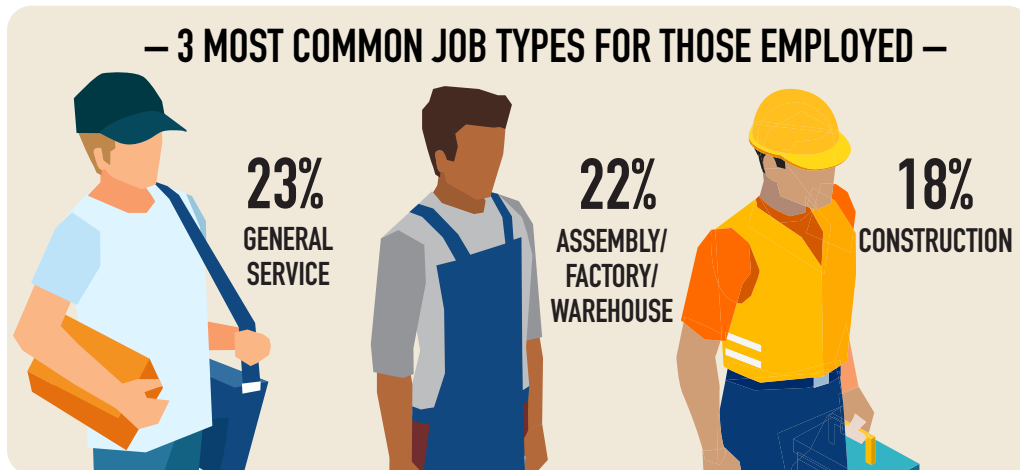
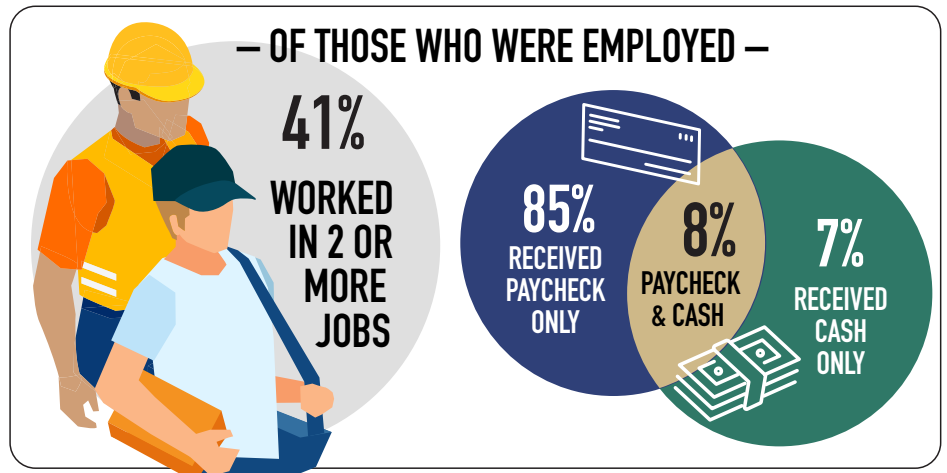
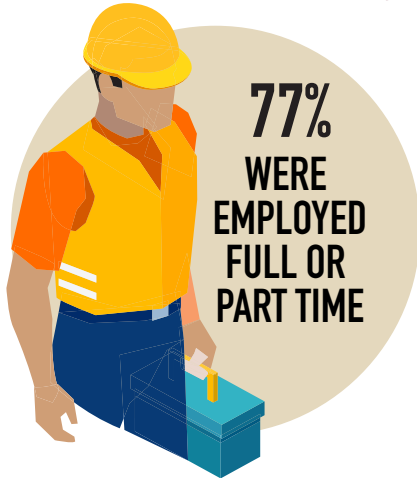
INSTITUTE FOR JUSTICE RESEARCH AND DEVELOPMENT

FLORIDA STATE UNIVERSITY • COLLEGE OF SOCIAL WORK • IJRD.CSW.FSU.EDU



TEXAS 8 Months After Release

Employment Over Past 6 Months



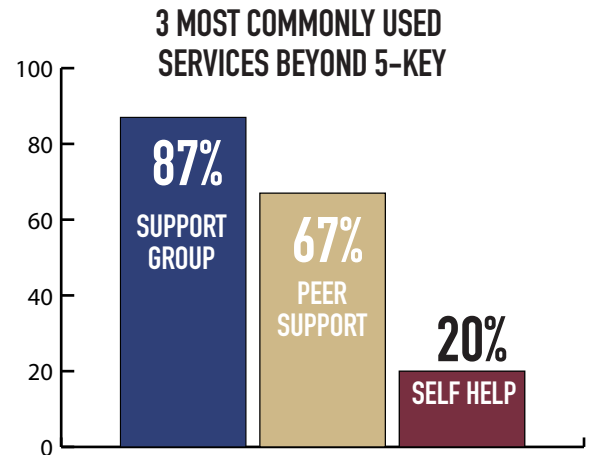
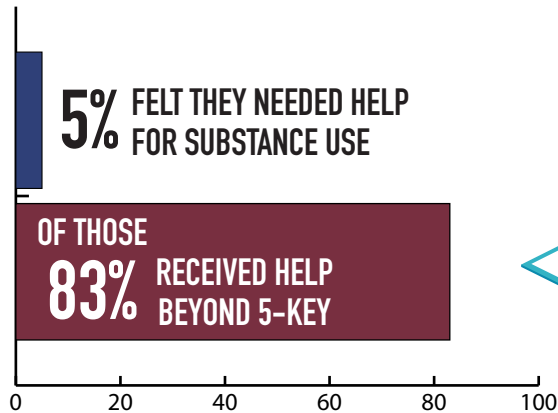
INSTITUTE FOR JUSTICE RESEARCH AND DEVELOPMENT

FLORIDA STATE UNIVERSITY • COLLEGE OF SOCIAL WORK • IJRD.CSW.FSU.EDU

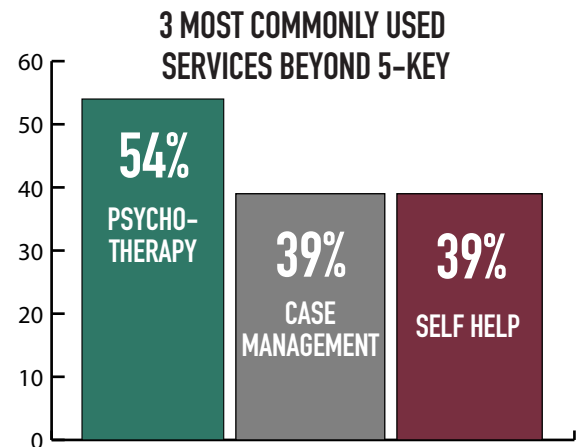
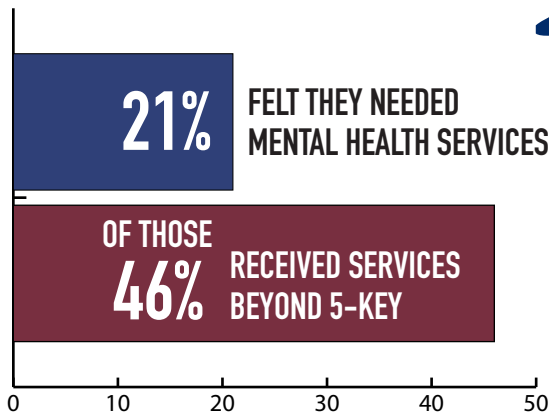


TEXAS 8 Months After Release

Substance Use



Mental Health



OF THOSE
REQUIRED TO PAY
CHILD SUPPORT

2%
FAILED
TO PAY

98%
PAID SUPPORT



INSTITUTE FOR JUSTICE RESEARCH AND DEVELOPMENT

FLORIDA STATE UNIVERSITY • COLLEGE OF SOCIAL WORK • IJRD.CSW.FSU.EDU